

# HAWAY

Professional Trailer Parts Manufacturer





# About Haway

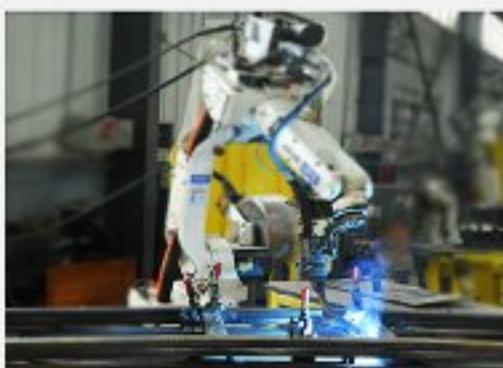
Haway is a professional manufacturer has been producing trailer parts since 2002. We supplying a variety of axles, leaf springs, trailer jacks, trailer fenders,boat trailer rollers and other trailer parts.

Haway offers different solutions for different kinds of customers:

- 1)For the trailer manufacturers, we can make products according to customer's required size and specifications. We also provide free samples.
- 2)For trailer parts distributors or wholesalers, we recommend the right trailer parts that suit for customer's market, which saving customers time and energy to discuss with many suppliers.
- 3)We recommend different packaging to customers based on their sale model. For example if customers do online sales we recommend mail packaging.

We accept small batches of trials orders, so that customers do not need to invest much and take much risk at the beginning. Haway is not only a manufacturer or supplier of trailer parts, but also dedicated to providing customers with more services to promote common development.

"Parts Make Perfect" is our culture. Serving our customers well by doing each small thing and each trailer part well is what we are always pursuit.





## Trailer Straight Axles



Capacity	Axle Beam	Hub	Brake	P.C.D	Surface Finish	Length
750kg	φ40mm or 40x40mm	8" Drum	No	114.3-5 lugs	Powder coated or Galvanized	Custom Length
1000kg	φ40mm or 40x40mm	8" Drum	Mechanical	114.3-5 lugs	Powder coated or Galvanized	Custom Length
1000kg	φ40mm or 40x40mm	10" Disc	Mechanical	114.3-5 lugs	Powder coated or Galvanized	Custom Length
1000kg	φ40mm or 40x40mm	10" Drum	Hydraulic	114.3-5 lugs	Powder coated or Galvanized	Custom Length
1000kg	φ40mm or 40x40mm	10" Disc	Hydraulic	114.3-5 lugs	Powder coated or Galvanized	Custom Length
1000kg	φ40mm or 40x40mm	10" Drum	Electric	114.3-5 lugs	Powder coated or Galvanized	Custom Length
1500kg	φ45mm or 45x45mm	10" Drum	Mechanical	114.3-5 lugs	Powder coated or Galvanized	Custom Length
1500kg	φ45mm or 45x45mm	10" Disc	Mechanical	114.3-5 lugs	Powder coated or Galvanized	Custom Length
1500kg	φ45mm or 45x45mm	10" Drum	Hydraulic	139.7-6 lugs	Powder coated or Galvanized	Custom Length
1500kg	φ45mm or 45x45mm	10" Disc	Hydraulic	114.3-5 lugs	Powder coated or Galvanized	Custom Length
1500kg	φ45mm or 45x45mm	10" Drum	Electric	139.7-6 lugs	Powder coated or Galvanized	Custom Length
2000kg	φ50mm or 50x50mm	10" Drum	Hydraulic	139.7-6 lugs	Powder coated or Galvanized	Custom Length
2000kg	φ50mm or 50x50mm	12" Disc	Hydraulic	139.7-6 lugs	Powder coated or Galvanized	Custom Length
2000kg	φ50mm or 50x50mm	10" Drum	Electric	139.7-6 lugs	Powder coated or Galvanized	Custom Length
3000kg	φ60mm or 60x60mm	10" Drum	Hydraulic	139.7-6 lugs	Powder coated or Galvanized	Custom Length
3000kg	φ60mm or 60x60mm	12" Disc	Hydraulic	139.7-6 lugs	Powder coated or Galvanized	Custom Length
3000kg	φ60mm or 60x60mm	12" Drum	Electric	139.7-6 lugs	Powder coated or Galvanized	Custom Length

We do custom products, OEM & ODM

## Trailer Torsion Axles



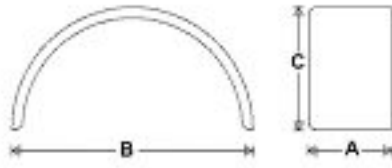
Capacity	Axle Beam	Hub	Brake	P.C.D	Surface Finish	Length
750kg	60x60mm	8" or 10"	No	114.3-5 lugs	Powder coated or Galvanized	Custom Length
750kg	60x60mm	8" Drum	Mechanical	114.3-5 lugs	Powder coated or Galvanized	Custom Length
750 kg	60x60mm	10" Disc	Mechanical	114.3-5 lugs	Powder coated or Galvanized	Custom Length
750 kg	60x60mm	10" Drum	Hydraulic	114.3-5 lugs	Powder coated or Galvanized	Custom Length
750 kg	60x60mm	10" Disc	Hydraulic	114.3-5 lugs	Powder coated or Galvanized	Custom Length
1000kg	70x70mm	8" Drum	Mechanical	114.3-5 lugs	Powder coated or Galvanized	Custom Length
1000kg	70x70mm	10" Disc	Mechanical	114.3-5 lugs	Powder coated or Galvanized	Custom Length
1000kg	70x70mm	10" Drum	Hydraulic	114.3-5 lugs	Powder coated or Galvanized	Custom Length
1000kg	70x70mm	10" Disc	Hydraulic	114.3-5 lugs	Powder coated or Galvanized	Custom Length
1000kg	70x70mm	10" Drum	Electric	114.3-5 lugs	Powder coated or Galvanized	Custom Length
1500kg	80x80mm	10" Drum	Hydraulic	139.7-6 lugs	Powder coated or Galvanized	Custom Length
1500kg	80x80mm	10" Disc	Hydraulic	139.7-6 lugs	Powder coated or Galvanized	Custom Length
1500kg	80x80mm	10" Drum	Electric	139.7-6 lugs	Powder coated or Galvanized	Custom Length
2000kg	90x90mm	10" Drum	Hydraulic	139.7-6 lugs	Powder coated or Galvanized	Custom Length
2000kg	90x90mm	12" Disc	Hydraulic	139.7-6 lugs	Powder coated or Galvanized	Custom Length

Half Torsion Axles Can Be Supplied Too



## Trailer Fenders

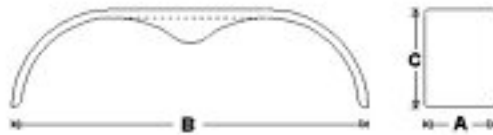
### Single Axle Trailer Fenders



Width(A)	Length (B)	Height(C)	Wheel Size	Material
197mm	711mm	255mm	13"	steel or aluminium or stainless steel
228mm	762mm	330mm	14"	steel or aluminium or stainless steel
228mm	813mm	381mm	15"	steel or aluminium or stainless steel
228mm	864mm	432mm	16"	steel or aluminium or stainless steel



### Tandem Axles Trailer Fenders



Width(A)	Length (B)	Height(C)	Wheel Size	Material
203mm	1423mm	330mm	13"	steel or aluminium or stainless steel
228mm	1651mm	381mm	14"	steel or aluminium or stainless steel
228mm	1727mm	432mm	15"	steel or aluminium or stainless steel



### Triple Axles Trailer Fenders



Width(A)	Length (B)	Height(C)	Wheel Size	Material
229mm	2667mm	457mm	13" or 14"	steel or aluminium or stainless steel
305mm	2743mm	520mm	14" or 15"	steel or aluminium or stainless steel



### Plastic Trailer Fenders

Width	Length	Height	Wheel Size	Material	Color
235mm	935mm	300mm	13"	PE	Black or White or Gray
235mm	995mm	300mm	14"	PE	Black or White or Gray




### Trailer Fenders Brackets

	Length	Width	Material	Surface Finish
L Shape brackets	190mm	146mm	Steel	Hot Dip Galvanized
I Shape brackets	995mm	215mm	Steel	Hot Dip Galvanized



Supply various sizes of trailer fender brackets based on your needs

## Trailer Jacks & Jockey Wheels

 JW350-1	 JW350-2	<b>Part No.</b>	<b>Capacity</b>	<b>Retracted Height</b>	<b>Extended Height</b>	<b>Tube Size</b>	<b>Wheel Size</b>	<b>Surface Finish</b>
		JW350-1	350 LBS	600mm	830mm	Φ48x2	8" rubber wheel	zinc
 JW750-1	 JW750-2	<b>Part No.</b>	<b>Capacity</b>	<b>Retracted Height</b>	<b>Extended Height</b>	<b>Tube Size</b>	<b>Wheel Size</b>	<b>Surface Finish</b>
		JW750-1	750 LBS	600mm	830mm	Φ48x2	6" rubber wheel	zinc or galvanized
 JW1500-1	 JW1500-2	<b>Part No.</b>	<b>Capacity</b>	<b>Retracted Height</b>	<b>Extended Height</b>	<b>Tube Size</b>	<b>Wheel Size</b>	<b>Surface Finish</b>
		JW1500-1	1500 LBS	600mm	830mm	Φ51x2.5	8" plastic wheel	zinc or galvanized
 JW1500-3	 JW1500-4	<b>Part No.</b>	<b>Capacity</b>	<b>Retracted Height</b>	<b>Extended Height</b>	<b>Tube Size</b>	<b>Wheel Size</b>	<b>Surface Finish</b>
		JW1500-3	1500 LBS	620mm	880mm	Φ48x2	8" rubber wheel	zinc
 JW2000		<b>Part No.</b>	<b>Capacity</b>	<b>Retracted Height</b>	<b>Extended Height</b>	<b>Tube Size</b>	<b>Wheel Size</b>	<b>Surface Finish</b>
		JW2000-D	1500 LBS	600mm	860mm	Φ57x2	2X 6" plastic wheel	zinc or galvanized
 TJ2000-1	 TJ2000-2	<b>Part No.</b>	<b>Capacity</b>	<b>Retracted Height</b>	<b>Extended Height</b>	<b>Tube Size</b>	<b>Surface Finish</b>	
		TJ2000-1	2000 LBS	451mm	645mm	Φ51	zinc	
 TJ5000-1	 TJ5000-2	<b>Part No.</b>	<b>Capacity</b>	<b>Retracted Height</b>	<b>Extended Height</b>	<b>Tube Size</b>	<b>Surface Finish</b>	
		TJ5000-1	5000 LBS	420mm	680mm	Φ57	zinc + powder coated	
 TJ2000-A		<b>Part No.</b>	<b>Capacity</b>	<b>Retracted Height</b>	<b>Extended Height</b>	<b>Tube Size</b>	<b>Surface Finish</b>	
		TJ2000-A	2000 LBS	530mm	940mm	Φ48	zinc + powder coated	
 TS5000		<b>Part No.</b>	<b>Capacity</b>	<b>Retracted Height</b>	<b>Extended Height</b>	<b>Material</b>	<b>Surface Finish</b>	
		TS5000	5000 LBS	130mm	600mm	3mm steel plate	powder coated	
 TS-1	 TS-2	<b>Part No.</b>	<b>Retracted Height</b>	<b>Extended Height</b>	<b>Material</b>	<b>Surface Finish</b>		
		TSL-1	390mm	570mm	3mm steel plate	powder coated		
		TSL-2	290mm	460mm	3mm steel plate	powder coated		



## Trailer Leaf Springs

### Double Eye Leaf Springs

Capacity	Size	Length	Free Camber	Surface Finish
1350kg	45mm x 8mm x 5 leaf	710mm	105mm	painted or Dacromet
1450kg	45mm x 6mm x 6 leaf	710mm	105mm	painted or Dacromet
1105kg	60mm x 7mm x 5 leaf	700mm	120mm	painted or Dacromet
1350kg	60mm x 7mm x 6 leaf	700mm	120mm	painted or Dacromet
1530kg	60mm x 7mm x 7 leaf	705mm	120mm	painted or Dacromet
1720kg	60mm x 7mm x 8 leaf	700mm	120mm	painted or Dacromet



### Slipper Leaf Springs

Capacity	Size	Length	Free Camber	Surface Finish
600kg	45mm x 6mm x 3 leaf	760mm	150mm	painted or Dacromet
900kg	45mm x 6mm x 4 leaf	760mm	150mm	painted or Dacromet
1000kg	45mm x 6mm x 5 leaf	760mm	150mm	painted or Dacromet
1200kg	45mm x 6mm x 6 leaf	760mm	150mm	painted or Dacromet
1350kg	60mm x 7mm x 6 leaf	765mm	150mm	painted or Dacromet
1720kg	60mm x 7mm x 8 leaf	760mm	150mm	painted or Dacromet



### Rocker Leaf Springs

Capacity	Size	Length	Free Camber	Surface Finish
2000kg	60mm x 7mm x 5 leaf	700mm	145mm	painted or Dacromet
2500kg	60mm x 7mm x 6 leaf	700mm	145mm	painted or Dacromet
3000kg	60mm x 7mm x 7 leaf	700mm	145mm	painted or Dacromet



### Trailer Leaf Springs Accessories



### Trailer Couplers

Part No.	Capacity	Ball Size	Material	Brake
TCP-1	2000kg	50mm	Casting Steel	No
TCP-2	2000kg	50mm	Casting Steel	Mechanical Brake
TCP-3	2000kg	50mm	Casting Steel	Hydraulic Brake
TCP-2000	2000lb	1 7/8"	Steel	No
TCP-3500	3500lb	2"	Steel	No
TCPA-5000	5000lb	2"	Steel	No





## Boat Trailer Rollers

### Keel Rollers

Part No.	Length	Diameter	Hole Size	Available Color
 KR1033	90mm	48mm	17mm	Blue/Black/Yellow/Red
 KR1017	98mm	76mm	13mm	Blue/Black/Yellow/Red
 KR1035	98mm	59mm	17mm	Blue/Black/Yellow/Red
 KR1018	100mm	59mm	17mm	Blue/Black/Yellow/Red
 KR1026	100mm	57mm	17mm	Blue/Black/Yellow/Red
 KR1029	115mm	69mm	17mm	Blue/Black/Yellow/Red
 KR1016	116mm	69mm	17mm	Blue/Black/Yellow/Red
 KR1019	129mm	76mm	14mm	Blue/Black/Yellow/Red
 KR1025	152mm	67mm	17mm	Blue/Black/Yellow/Red
 KR1028	154mm	70mm	20mm	Blue/Black/Yellow/Red
 KR1031	155mm	57mm	17mm	Blue/Black/Yellow/Red
 KR1015	156mm	74mm	20mm	Blue/Black/Yellow/Red
 KR1041	182mm	84mm	16mm	Blue/Black/Yellow/Red
 KR1014	184mm	64mm	18mm	Blue/Black/Yellow/Red
 KR1042	185mm	84mm	30mm	Blue/Black/Yellow/Red
 KR1030	191mm	71mm	21mm	Blue/Black/Yellow/Red
 KR1024	192mm	71mm	21mm	Blue/Black/Yellow/Red
 KR1032	192mm	68mm	17mm	Blue/Black/Yellow/Red
 KR1044	192mm	71mm	22mm	Blue/Black/Yellow/Red
 KR1043	194mm	67mm	22mm	Blue/Black/Yellow/Red
 KR1027	196mm	69mm	22mm	Blue/Black/Yellow/Red
 KR1010	200mm	70mm	20mm	Blue/Black/Yellow/Red
KR1013	201mm	70mm	20mm	Blue/Black/Yellow/Red
 KR1011	227mm	51mm	14mm	Blue/Black/Yellow/Red
 KR1045	235mm	84mm	17mm	Blue/Black/Yellow/Red
 KR1046	284mm	67mm	36mm	Blue/Black/Yellow/Red
 KR1047	288mm	71mm	17mm	Blue/Black/Yellow/Red
 KR1020	289mm	71mm	24mm	Blue/Black/Yellow/Red
 KR1048	291mm	80mm	22mm	Blue/Black/Yellow/Red
 KR1047				
 KR1020				
 KR1048				
 KR1011				
 KR1045				
 KR1046				
 KR1027				
 KR1010				
 KR1013				



### Boat Trailer Wobble Rollers



Part No.	Length	Diameter	Hole Size	Available Color
WR1001	110mm	75mm	18mm	Blue/Black/Gray/Red/White
WR1002	111mm	73mm	23mm	Blue/Black/Gray/Red/White
WR1003	126mm	77mm	22mm	Blue/Black/Gray/Red/White
WR1004	110mm	75mm	18mm	Blue/Black/Gray/Red/White
WR1005	109mm	74mm	26mm	Blue/Black/Gray/Red/White
WR1006	109mm	72mm	23mm	Blue/Black/Gray/Red/White
WR1007	109mm	74mm	22mm	Blue/Black/Gray/Red/White
WR1008	109mm	73mm	24mm	Blue/Black/Gray/Red/White
WR1009	126mm	76mm	37mm	Blue/Black/Gray/Red/White
WR1021	109mm	74mm	29mm	Blue/Black/Gray/Red/White
WR1022	127mm	76mm	38mm	Blue/Black/Gray/Red/White
WR1023	109mm	87mm	20mm	Blue/Black/Red
WR2022	110mm	72mm	26mm	Blue/Black/Gray/Red/White
WR2023	110mm	75mm	28mm	Blue/Black/Gray/Red/White

### Boat Trailer Bow Rollers And Stops



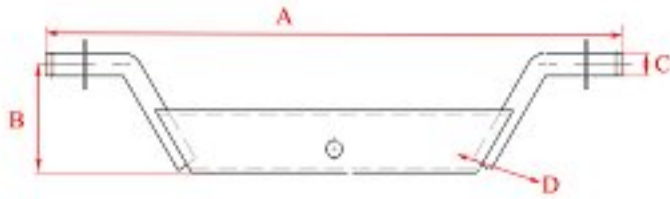
Part No.	Open	Width	Height	Hole	Available Color
BS2026	167mm	72mm	98mm	14mm	Black/Red
BS2027	110mm	158mm	78mm	/	Black/Red
BS2028	110mm	100mm	84mm	15mm	Black/Red
BS2029	110mm	70mm	87mm	15mm	Black/Red
BS2030	100mm	49mm	74mm	13mm	Black/Red

Part No.	Length	Diameter	Hole	Available Color
BR1036	94mm	73mm	14mm	Black/Yellow
BR1038	98mm	75mm	13mm	Black



**Boat Trailer Rollers Assembly**

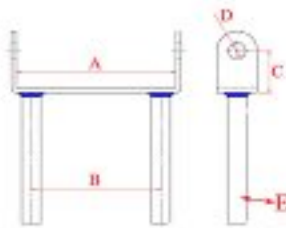
**Wobble Roller Arms**



Part No.	A	B	C	D	Surface Finish
WB610	385mm	86.5mm	Φ18mm	50x25mm steel tube	Galvanized
WB611	356mm	96mm	Φ18mm	50x25mm steel tube	Galvanized
WB615	516mm	86.5mm	Φ25mm	50x25mm steel tube	Galvanized
WB616	516mm	84mm	Φ18mm	50x25mm steel tube	Galvanized
WB565	490mm	95mm	Φ24mm	Φ24mm steel bar	Galvanized
WB522	532mm	95mm	Φ24mm	Φ24mm steel bar	Galvanized
WB510	660mm	86.5mm	Φ25mm	Φ24mm steel bar	Galvanized



**Keel Roller Brackets**



Part No.	A	B	C	D	E	Surface Finish
KB160	160mm	130mm	46mm	17.5mm	19x19mm steel bar	Galvanized
KB167	167mm	160mm	45mm	22mm	φ18mm steel bar	Galvanized
KB118	118mm	/	53mm	17mm	19x19mm steel bar	Galvanized



**Bunk Brackets**

Part No.	Height	Width	Hole	Slot	Surface Finish
BK009	216mm	100mm	φ15.5mm	14x76.5mm	Galvanized
BK010	254mm	100mm	φ15.5mm	14x76.5mm	Galvanized
BK012	305mm	100mm	φ15.5mm	14x76.5mm	Galvanized
BK014	355mm	100mm	φ15.5mm	14x76.5mm	Galvanized





### Boat Trailer Posts

Part No.	A	B	C	D	Surface Finish
PST640	242mm	70mm	45mm	40x40 steel tube	Galvanized
PST901	220mm	43mm	35mm	19x19 steel bar	Galvanized
PST920	260mm	54mm	42mm	40x40 steel tube	Galvanized
PST921	320mm	43mm	35mm	40x40 steel tube	Galvanized
PST922	333mm	43mm	35mm	40x40 steel tube	Galvanized
PST940	291mm	50mm	33mm	19x19 steel bar	Galvanized
PST945	264mm	30mm	42mm	40x40 steel tube	Galvanized
PST017	252mm	42mm	42mm	19x19 steel bar	Galvanized
PST244	312mm	42mm	42mm	19x19 steel bar	Galvanized



### Tube Slide Adjusters

Part No.	A	B	C	Surface Finish
TSA105	52mm	60mm	22x39mm	Galvanized
TSA130	52mm	63mm	50x50mm	Galvanized
TSA137	77mm	63mm	50x50mm	Galvanized
TSA190	52mm	63mm	50x50mm	Galvanized



### Boat Trailer Winch Supports



### Trailer Can Holders



Trailer Steps



Trailer Latches



Bearing Buddys